

RABI[®] NEWS

Celebrating our links with the farming community

Spring 2022



TV star shines at Staffordshire Dinner

Also in this issue:

- Volunteer conference preview
- Helping farming people
- Dates for the diary
- Celebrating the Platinum Jubilee
- Regional news highlights

24/7 helpline: 0800 188 4444
www.rabi.org.uk



Jeanette Dawson, RABI Chair

Chair’s welcome

“At this time of year I am thankful for the longer days; this year, more than ever. It’s been a tough time for farming and it takes no stretch of the imagination to perceive that the prevailing view from society is that farming is to blame for the world’s woes.

“Of course, we know better and there’s solace in living and working on the land, observing the emerging crops and the growing boldness of the spring lambs. Witnessing first hand, the ‘circle of life’ and all the positive aspects that a livelihood from the land can bring. But the anxieties are real.

“Community, is, however, one of our greatest individual defences and its importance has really hit home to me during the time I’ve had the honour to serve as Chair of our cherished charity.

“I always knew about the volunteers and the critical role played by those who give up their time from their already busy lives. But I have learnt that the full extent of the volunteers role extends far beyond fundraising. And of course, the funds raised are immensely important, but actually, it’s what is less obvious that also makes such an important difference.

“I’m talking about the communities nurtured by volunteer local committees – and thank goodness we finally have the opportunity to reconnect in ‘real life’. They are at the heart of the charity and an essential part of the wider farming

community network. I struggle to think of any other part of society that can rival their spirit, resilience and ‘can do’ attitude.

“Just look at the farmer-led reaction to Storm Arwen. I was in Northumbria at the time and witnessed the magnificent effort from farmers who were out from the early hours clearing the A1, opening-up the road network to all. Farmers are the first responders and don’t wait to be asked.

“Yet, we’re a community that’s not invincible.

“There is change ahead and while daunting, our farming communities have always faced change and adapted.

“RABI is here to help in the face of that change and is responding to the evolving challenges. In my last welcome as chair, I wish you all well and look forward to seeing RABI continue to go from strength to strength in offering the best possible level of support, ensuring no one in farming ever faces adversity alone.”

Jeanette

Contents

- P2 Chair’s welcome
- P3 Alicia Chivers’ big picture
- P4 National news highlights
- P5 Volunteer conference
- P6/7 Helping farming people
- P8 Dates for the diary
- P9 Regional shows
- P10/11 Platinum Jubilee
- P12/17 Regional news
- P18/19 Meet the team
- P20 Signposting services



inquiry into rural mental health. I was invited in April to provide further evidence on the specific factors influencing poor levels of mental wellbeing in farming communities and consider possible solutions at the second Committee session. It is important that we use these invaluable opportunities to both inform the conversation and to champion our community.

“By the time you read this, we will have hosted our volunteer conference on 25 May and undertaken a number of events to coincide with national volunteers’ week, celebrating the continued commitment and enthusiasm of RABI’s network of volunteers.

“I am very much looking forward to attending events around the country and meeting many more of RABI’s volunteers and supporters. RABI will be at the shows all over England and Wales and we’re looking forward to hearing directly from farming people about the issues that are

Alicia Chivers’ big picture – Extending support for farming people

“In the previous winter edition of RABI News, I wrote about looking forward to opportunities to meet face-to-face once lockdown restrictions had eased. Sadly, our newly regained freedoms have been entirely overshadowed by the devastating conflict in Ukraine.

“As a fellow farming nation, the profound effects of the conflict are being felt on many levels. The devastating humanitarian impact and long-term political consequences continue to unfold, while the economic implications are already hitting the UK farming sector with rising fuel, feed and fertiliser prices. These additional financial burdens only add to the pressures already felt by our community.

“During this period of profound change, RABI remains focused on providing accessible, professional support and services. Not just help at a critical time, but everyday support as well, be that practical expert advice or a trained counselling professional to talk to.

“Working closely with a range of partners, RABI continues to respond to the poor experiences that too many farming people tell us about. By talking openly about the issues and their impacts, we believe the charity is instrumental in supporting positive changes that will result in increased farmer wellbeing.

“It’s encouraging that consideration of poor levels of mental health in rural communities is gaining recognition as a topic of concern for government. Our research partners, the University of Exeter, recently presented evidence from our Big Farming Survey at the first session of the EFRA Committee

facing, raising awareness of our services and generally having a good catch-up and a chat.

“If you’re attending events over the coming months, I encourage you to visit RABI’s stand to talk to a member of the team or some of our fantastic volunteers and find out more about our support and services. Thank you for continuing to support RABI and please continue to be part of the conversation.”

“On behalf of the Council of Trustees and everyone at RABI, I would like to thank Jeanette Dawson for her dedication and hard work as Chair of Trustees. We all wish Jeanette every success in her future endeavours.”



Alicia Chivers, RABI Chief Executive

National news highlights

Shaping the future of farming support

Mental health awareness

Much like the weather, our mental state is changeable; there are good days and sometimes bad days. With the Big Farming Survey revealing that farming people have worryingly low levels of wellbeing, RABI has launched in-person counselling and mental health training.

Face-to-face counselling is a fast, free and confidential service which provides support to anyone wanting to talk to a farming-trained professional.

To give people greater confidence when talking about wellbeing issues, RABI's farmer-focused mental health training comes with a unique aftercare service so no one shoulders the burden of support alone. Organisations interested in accredited training can email mentalhealthtraining@rabi.org.uk.

Repairing storm damage

February 2022 will be remembered for its barrage of storms; Dudley, Eunice and Franklin caused widespread disruption. Farming people affected by the extreme weather were able to apply for emergency grants of £1,000 from RABI.

"We have received applications from numerous people who've been badly impacted by storm damage," says RABI services

manager, Helen Sisk. "The unpredictability of extreme weather events is always a worry. RABI's response has helped to relieve some of the financial worries and get farmers back on track."



Energy costs support

Energy costs have risen dramatically, putting extra pressure on already stretched households. Research from National Energy Action (NEA) estimates that 6.5 million family homes across the UK are in fuel poverty.

"People facing financial hardship through cost increases can apply for grants of up to £1,500 towards bill payments or making homes more energy efficient," says RABI director of services, Caron Whaley.

Energy efficiency improvements include boiler servicing, installing water tank jackets, lagging for pipes, or installing loft insulation.

To better understand fuel poverty's impacts, RABI's regional support officers have received specialist training from the NEA.

Farmer wellbeing

At January's Oxford Farming Conference (OFC), RABI and RSABI presented a video featuring farmers Will Evans and Ffion Hooson. This year's conference theme was 'Routes to Resilience' and the collaborative video highlighted just how important it is that farming people feel confident reaching out for support. The video can be seen on rabi.org.uk.



Great British Beef Week is heavenly

RABI's longstanding relationship with Ladies in Beef continues, as the chosen charity partner for Great British Beef Week in April. During the celebrations, people were encouraged to support the industry and share their beef heaven and hell dishes. Read more about RABI's regional GBBW fundraising events on page 17.



Volunteers, conference spotlight

Together again, at last!

It has been such a joy to be able to organise this year's volunteers' conference. Guests from across RABI's regional network of county committees came together for a day of celebration at the stunning Stapleford Park near Melton Mowbray in Leicestershire, this May.

RABI's volunteering team planned a full programme to thank county committee members for all their remarkable efforts. Guests were welcomed by RABI chair, Jeanette Dawson, before chief executive, Alicia Chivers, gave an overview of the charity's plans during this time of unparalleled change in farming.

Head of partnerships, Suzy Deeley and director of services, Caron Whaley, introduced the charity's latest services, giving volunteers insight into the progress being made. Several recently appointed regional managers also talked about their role in the organisation, supporting volunteers.

During the conference, Exmoor hill farmer and RABI beneficiary, Oliver Edwards, kindly shared his farming life experiences; a big thank you to Pam Wills for suggesting Oliver and making this happen. The day's keynote speaker was also a farmer with a national presence, the charismatic businessman and author, Wilfred Emmanuel-Jones MBE, also known as 'The Black Farmer'.

During the afternoon the national volunteer awards were held. This was a chance to celebrate RABI's most dedicated, creative and inspiring volunteers. This year, there were several new categories with a total of 14 awards presented.

The conference was a fantastic showcase of all that is good about volunteering and provided an opportunity for the regions to come together, catch up, have fun and learn about all the important things happening at RABI. After the difficulties of the pandemic, many people haven't seen each other for some considerable time and getting together is always beneficial.

Look out for highlights from the event including the volunteers recognised during the special awards ceremony in the next issue of RABI News.



"Volunteering is all about people. So much of RABI's work is dependent on the backbone of support that our county committee network provides. We thank everyone for their incredible support."

Izzy Shaw, head of volunteering

Introducing The Black Farmer

Wilfred is, in his own words, 'a poor boy, done good'. Born in Jamaica, he came to the UK in the 1950s as part of the Windrush generation.

He worked as a chef before pursuing a career in television. As a producer/director for the BBC, Wilfred brought many of the top UK chefs to the small screen including Gordon Ramsay, Antony Worrall-Thompson, Brian Turner and James Martin.

In 1994 he founded a food and drink marketing agency in London before fulfilling a lifelong ambition of owning a small farm in Devon in 2000. This inspired him to develop and launch his own food brand, The Black Farmer. Wilfred was awarded an MBE for services to farming in the 2020 New Year's Honours List.



Wilfred Emmanuel-Jones
'The Black Farmer'

Helping farming people

For the everyday and the unexpected

Life in farming doesn't always go to plan, even when we really want it to! In response RABI's traditional charitable support is expanding to meet an ever-broader range of needs.

The farming community is made of diverse people, with diverse backgrounds. Here we showcase just some examples of how RABI supports our farming community.

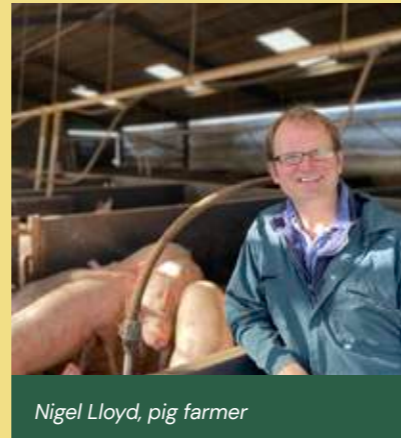
Support throughout the ongoing pig crisis

As the pig industry crisis continues, uncertainty is a huge cause of concern for many farmers in the sector. RABI responded by making its in-person counselling service available three months ahead of schedule to support those affected.

Nigel Lloyd, a pig producer in Shropshire, says that speaking to somebody who is impartial but familiar with the situation has been a big help.

"I've found RABI's new counselling service invaluable for support. It's very straightforward – once you call up the helpline, you're recommended somebody to talk to for advice on your specific circumstances.

"You may not have any pig farmers nearby who can relate to the issues you're faced with, and even if you talk to family, they might not understand. Although there's no quick solution to solve all your problems, talking helps to get things straight in your mind, and it's helped us find that we have options for the future."



Nigel Lloyd, pig farmer

Congratulations to RABI heroes Scott and Milo

It was fantastic to see RABI beneficiary, Scott Bailey and his guide dog Milo reach the 'Hero Dog' finals at Crufts in March.

Father of two, Scott, has been on a remarkable journey since losing his eyesight, which left him unable to continue working as a herdsman in Cheshire.

RABI gave Scott a grant to buy a laptop with software developed for people with impaired vision, and specialist lighting, to help him perform everyday tasks at home.

Scott says he initially thought that he was too young for RABI to help but now he realises that the charity supports people of all ages and encourages others to call the helpline. "RABI has made a massive difference to me. Having the right support has helped me get on with life and regain some independence," says Scott.



Scott Bailey with Milo

Welsh farmers use WhatsApp to stay in touch

Many of the farmers that applied for emergency storm grants are from Carmarthenshire. When speaking to farmers from the area, RABI's service delivery

team found out they had set up a WhatsApp group where they share regular farming updates including information about the storm grants. Regional welfare

officer, Gemma Raia said, "What an amazing use of technology to bring the community together and stay connected!"

Taking the first step to get support

"It is always good to talk," says Thistle*, a sheep farmer and RABI beneficiary from Gloucestershire.

"It is all too easy to say, 'I'm fine', when sometimes the opposite is true. Talking about your negative feelings can be a real challenge, particularly if you've been working alone all day, with the same worries going round and round in your head.

"For me, it was such a relief taking

the first step and registering with RABI's online wellbeing platform, Qwell, to start some virtual counselling sessions with a qualified therapist. It meant I could take my time composing my thoughts and chat without the rest of the household knowing. I definitely felt so much better once I had gone ahead and done it." www.rabi.org.uk/kooth



*Thistle is a pseudonym.

Meet the team: Chloe Rigler – services manager

Chloe works within the service delivery team, which is frequently RABI's first point of contact with farming people that need support. Chloe has recently been promoted to services manager after five years covering Devon and Cornwall as a regional welfare officer (RWO).



Chloe Rigler, services manager

What made you want to join RABI?

RABI offered the chance to make a positive difference by going into people's lives, helping get to the root of the issue and supporting to put it right.

What gives you job satisfaction?

When you manage to make a positive change or somebody says, 'you don't know how much you've done for me'. That feedback makes it all worthwhile.

Is there a beneficiary that's had a real impact on you?

That's a really difficult question as they're all so unique. There was one chap who continued to work through very ill health. It got to the point where his doctors were saying he should be bedridden, but he continued to get up every day and keep going. He was totally inspiring in terms of prioritising the care of his animals because that was what was important to him.

What excites you about your new role?

For me, it's all about building trust and working together to make positive changes. The day-to-day life of many farmers is relentless and we all want to do the very best we can for the farming community.

Dates for the diary

Making up for lost time

After two very quiet years, the social calendar is finally starting to fill up. RABI will be attending numerous shows over the summer. These events are a friendly place for visitors to find out more about the support services that are available to farming people and how you can get involved.

Who’s heading to Cereals?

8–9 June 2022, Duxford, Cambridgeshire

Look out for the RABI marquee again at the biggest arable event in farming and be sure to stop by to say hello to the team.

This year, RABI is one of the event’s three charity partners with 50% from each ticket sale being donated to the purchaser’s chosen charity. Big thanks to Compexposium for their ongoing support and for promoting RABI in their regular newsletter.

Tickets can be booked through the website: cerealsevent.co.uk



Suzy Deeley, head of partnerships and Izzy Shaw, head of volunteering at Cereals 2021



Cereals: The Arable Event

“Following two difficult years, it’s really great that events are resuming at pace. We’ve a lot to look forward to and events are a fabulous way to catch-up with friends whilst supporting our cause.”



Linda Jones, RABI regional manager, Wales.



Ahead of Volunteers’ Week, remember to share your personal stories about volunteering with your regional manager so these can be shared far and wide.

Get involved



To say ‘thank you’ for all the volunteer’s hard work, they’re being invited to join an exclusive three course meal cook-along with multi-award-winning chef, Chris Wheeler. Other planned activities for the week include:

- Encouraging agricultural colleges and Young Farmer Clubs to pledge volunteering hours to RABI
- Volunteering time to phone a friend
- Making the HM Queen’s Platinum Jubilee Beacon Tart (see page 11) To take part in the cook-along, email Sally. Conner@rabi.org.uk or Lauren. Codling@rabi.org.uk



Chris Wheeler, Chef

Find RABI at your local regional show

Agricultural and county shows are often the pinnacle in the rural calendar. Packed full of farm machinery, livestock, food and family fun, there’s always plenty to do and see. This summer RABI will be at over 50 events, is there one near you?

June

- Suffolk Show
- Staffordshire Show
- Royal Bath & West Show
- Northumberland County Show
- Royal Cornwall Show
- Open Farm Sunday
- South of England Show
- Aberystwyth & Ceredigion County Show
- Three Counties Show
- Blaston Show
- Royal Norfolk Show
- Devon County Show
- Lincolnshire Show



July

- Hanbury Show
- Liskeard Show
- Stithians Show
- Fruit Focus
- Great Yorkshire Show
- Camborne Show
- Royal Welsh Show
- Drifffield Show
- Royal Lancashire Agricultural Show
- Mid Devon Show
- Ryedale Show
- Yealmpton Show
- New Forest & Hampshire Show
- Totnes & District Show



August

- North Devon Show
- Honiton Show
- Shearwell Sheep Fair
- Brecon County Show
- Anglesey Show
- Burwarton Show
- Vale of Glamorgan Show
- Eglwysbach Show
- Ellingham Show
- Pembrokeshire County Show
- Gillingham & Shaftesbury Show
- Denbigh & Flint Show
- Chagford Show
- Dunster Show
- Ashbourne Show
- Minsterley Show
- Yesterday’s Farming Show
- Merionethshire County Show
- Melplash Show
- Talybont Show
- Child Okeford Fair
- Aylsham Show
- Glendale Show

Get ready for the volunteer roadshow

This autumn/winter, members of the RABI team from central office will be undertaking regional roadshows with visits planned to locations in the north, south, east and west of England and Wales. The roadshows will be piloted this year and if successful, more will be held next year, so your input and feedback is important.

Each roadshow will allow volunteers to find out more about the charity’s work and how it operates. Importantly it will mean that county committees can meet members of the central team to talk about any issues or queries that might arise.

It also gives the central team the opportunity to meet volunteers face to face and to better understand what happens regionally. The volunteering team will be organising this with support from regional managers; dates will follow later in the summer.

“I recognise that not all our volunteers have the chance to attend central RABI events such as the conference and AGM,” says Izzy Shaw, head of volunteering. “I think it’s important that we build good, solid relationships with the volunteers that do so much positive work for RABI.”

“By coming to different regional locations it gives us the opportunity for those one-to-one conversations with all the RABI teams who are there to support you. We hope the roadshows will allow everyone who attends the day to meet people they

might not have engaged with before, to network with other regions who are close to them and to understand a bit more about how RABI operates.

“The roadshows will be a two-way engagement to build a greater understanding of how we can all work together,” says Izzy.



Izzy Shaw, head of volunteering

Celebrating the Platinum Jubilee

In 2022, Her Majesty The Queen will become the first British Monarch to celebrate a Platinum Jubilee after 70 years of service. It is an extraordinary achievement and one that will be marked over the Platinum Jubilee Central Weekend, which takes place from 2 to 5 June.

RABI's royal connections date back to Queen Victoria who became the charity's first patron and succeeding monarchs have followed suit. This includes George V, who granted a Royal Charter in 1935 to mark the charity's 75th anniversary. Queen Elizabeth II is RABI's sixth royal patron and the longest serving by an incredible 50 years!

Many public events are taking place, including Trooping the Colour, the Platinum Jubilee Pageant at Buckingham Palace, and not forgetting numerous local street parties. You can also get involved at home by baking a special Platinum Jubilee Beacon Tart (see the recipe on the next page).

The Jubilee coincides with start of National Volunteer's Week (1-7 June). RABI volunteers who send in pictures of their homemade tart will receive a certificate of recognition produced especially for the Platinum Jubilee. The best pictures will also be shared on RABI's website and social media channels. Send pictures to Kim Claxton specifically, kim.claxton@rabi.org.uk

Royal recollections – RABI volunteers commemorate 70 years

During Queen Elizabeth II's reign, there have been many momentous occasions that have been enjoyed by RABI volunteers. Some of RABI's longest-serving county committee members share their favourite royal moments:

Stuart Bish, volunteer

"In regards to the Platinum Jubilee, our committee is encouraging the registration and lighting of beacons along with promoting the special Platinum Jubilee Tart to be made and eaten around the beacons. I had the privilege of being one of the first taste testers due to my wife Christine's involvement in the recipe!"

Mike Shelley, volunteer

"My fondest memory of the Queen was in 2011. After being county chairman for the Staffordshire and Birmingham Agricultural Society, we were invited to one of the Queen's Garden Parties. It was a wonderful day and to see her in person was just great."



The Queen's Platinum Jubilee Beacon Tart

Made with ingredients representing the four nations of the UK, every mouthful is both patriotic and delicious. Serves ten people.

Pastry (or use ready-made shortcrust pastry)

- 140g (5 oz) plain flour
- 35g (1 ¼ oz) margarine
- 35g (1 ¼ oz) vegetable fat
- About 1 ½ tablespoons cold water
- 20cm (8") loose-bottom flan tin
- Baking beads

Filling

- Scotland: 100g (4 oz) smoked salmon (trimmings or chopped small)
- Wales: 50g (2 oz) finely sliced and gently fried leeks soft but not coloured
- Northern Ireland: 100g (4 oz) peeled and cooked potatoes, thinly sliced when cold
- England: 70g (2 ¾ oz) Cheddar cheese (grated)
- 200ml (7 fl oz) single cream
- 2 large eggs (beaten)
- 1 tablespoon fresh chopped parsley
- Black pepper

Method

1. Make the pastry and leave to chill for 30 minutes.
2. Preheat oven to 200°C fan (gas 7).
3. Line the greased flan tin with pastry and prick the bottom with a fork before lining with baking paper and baking beans. Bake for 10 minutes, remove foil / beans, bake for a further 10 minutes.
4. Reduce oven to 160°C Fan (Gas 4).
5. Mix cream, eggs, parsley and pepper together.
6. Layer filling in the pastry case; smoked salmon first, followed by leeks and then 50g (2 oz) of cheese. Top with potatoes. Sprinkle remaining cheese over the top then gently pour cream and egg mixture into the tart.
7. Bake for 30 – 35 minutes until filling is set and golden. Serve cold. Enjoy!



Gerard Poulter, volunteer

"In November 2002, Princess Anne attended the RABI AGM in London, where she gave a very informative address regarding the problems facing the industry. She also voiced her encouragement for us to help the next generation of farmers, something all the Royal Family are well known for."



Chris Downes, volunteer

"We had a Diamond Jubilee Beacon in 2012 on our field for people from local villages. The field is highest in locality, with views, and wonderful to see all the surrounding hills lit up with Beacons. There was a hog roast, and it was an excellent evening to celebrate."





Northwest (Lauren Codling)

It's been a busy couple of months in the North West since joining RABI, with lots of networking, relationship building and getting to know the wonderful volunteers who do so much to support RABI. I'd like to specifically thank the Northwest volunteers for making me feel so welcome and making my first few months so enjoyable. It's great to see so many supporters in the region and I am looking forward to meeting more of you in the coming months.

UK Dairy Expo

Our committee in Cumbria attended the first show of 2022 in early March at H&H Borderway Mart, Carlisle for the UK Dairy Expo. The expo was a great opportunity to raise awareness within the farming community, make connections with agricultural companies and they even held a raffle. A huge thank you to Gillian and Alison for their support.



Gillian Potts and Alison Wilson at the UK Dairy Expo

Singing their praises

In March, I met with the wonderful team at Gisburn Auction Mart, Lancashire, to receive a cheque for £3,549.50. This money was raised at their annual Christmas carol concert in December and through their charity sheep sales. Gisburn Auction Mart has been a huge supporter of RABI over the years, and we are very grateful for everything they do to support our farming communities.



John Prickett and Tom Greenow presenting a cheque to regional manager, Lauren Codling at Gisburn Auction Mart



Northeast (Sally Conner)

Pig World podcast

The North East counties have had a great start to the year, with lots of committee meetings to plan our year ahead as well as attending many events and meeting lots of new people. One thing that I have never done before, though, is a podcast. I was invited by 'Pig World' to talk about how our pig farmers cope with their

own mental health during such a worrying time. The mental health training I received as part of my role helped me to talk about the support available and the signs to look out for if you feel somebody may need some help.

Machinery shows

We have had a couple of machinery shows in the Northeast, one run by Ripon Farm Services at Harrogate and one run by York Auction Mart on their site. Both shows were really busy, with farmers loving the opportunity to meet and chat with each other again. I was humbled by the support we were shown, and the encouragement to continue with our necessary work.

Further fun

Spring rounded off with several great fundraising events. East Yorkshire hosted a Beef Dinner Evening to celebrate Great British Beef Week, North Yorkshire participated in a Call My Bluff Wine Evening, and County Durham is running a Golf Day! There was also much celebrating in the East Yorkshire Committee, as the secretary got married and the chair and his wife welcomed their third child within the same month.



Sally Conner Pigs Today podcast



North Wales (Dewi Parry)

Cilcain YFC Fundraising Ball

It's been an exciting time in North Wales lately. In February, we were honoured to receive a cheque for £1,196 from proceeds of a fundraising ball held by Cilcain YFC. It was a true story of resilience as this ball had to be rearranged twice, but the club took it as an opportunity to sell more tickets each time! It was great to give a talk about RABI to 35 members of the club when I went to receive the cheque.

Change of treasurer

March saw Montgomeryshire's AGM where Susan Jones handed over the reins of being treasurer to Tricia after twenty years in the role. RABI is full of heroes like Susan who selflessly give so much of themselves and for so long – we can't thank any of them enough.

April events

April was exciting as it saw our first Clwyd event of the year with a very successful bingo night in Pentre Halkyn. The hall was packed with people old and new, all enthused to support RABI. It was great to do something that felt so normal once more.



Montgomeryshire RABI volunteers



Wales (Linda Jones)

North to South Charity Challenge

The Wynnstay Group held a fantastic fundraiser for RABI with their North to South Charity Challenge. The challenge for every staff member, along with their family and friends, was to walk, run, swim, or cycle the distance from Wynnstay's most northern office in Montrose to their most southern store in Helston – a total of 644 miles.

201 Wynnstay staff members from 27 teams took part and they collectively travelled over 29,239 miles, covering the challenge distance over 45 times!

A cheque for £6,000 was recently presented to Linda Jones, RABI's regional manager in Wales by Gareth Davies, Wynnstay Group CEO.

"We are thrilled to have been able to undertake this challenge to raise funds for RABI. The work that RABI do is so fundamentally important to the farming community. As a business working within this sector, we feel it is vitally important to support the fantastic work they do," says Gareth.



Linda Jones, Wales regional manager receiving a cheque from Gareth Davies, Wynnstay Group CEO

Huge thanks goes to everyone involved and to Wynnstay for their continued support. The very generous donation will help us to reach more farming people.

Moody Cow fundraiser

Chris and Geraint Thomas of The Moody Cow Farm Shop and Bargoed Caravan Site, Llwyncelyn, Ceredigion raised £5,291.26 as a thank you to RABI. They hosted a day of fundraising activities, including a tractor run, cawl and entertainment, auction, and buffet held at their new "Ysgubor" function room.

The couple has made no secret of the fact that RABI helped them through a difficult time when they lost their farm near Brecon. Chris, Geraint, and their family have successfully rebuilt their lives and were awarded a 2021 Rural Business Award for Best Rural Diversification Project. They have never forgotten the support that RABI gave to them and are planning to host a Summer Ball on Saturday 13 August as a follow-up fundraiser.



Gareth Jones (Ceredigion RABI chair), Catrin Griffiths (Ceredigion RABI treasurer), Geraint Thomas and Henry Thomas (The Moody Cow), Euros Davies (Ceredigion RABI member)



Central (Bekah Anstey)

2022 already looks set to be an extremely busy year. It's clear that our volunteers work extremely hard to organise events, often under challenging circumstances. We're looking forward to seeing their efforts pay off in a successful 2022.

Annual Working Weekend

The NVTEC Midlands Group held a collection at their Annual Working Weekend where activities included ploughing, milling, saw benches, stationary/ barn engines, and static displays. The weekend was held at Lyndon Farm, Fleckney, Leicestershire by kind permission of the Smith family.



Derbyshire RABI chair, Bill Dilks attending a tour of Thornbridge Hall

Visit to Thornbridge Hall

One of the highlights over the past few months has to be attending Thornbridge Hall with our Derbyshire Committee Chair, Bill Dilks. We had the opportunity to have a tour and meet with the owners, who have agreed to host a wonderful celebration event for us on the 23rd of August. Thank you Thornbridge!

Lent talk

Another highlight was a Lent talk at St. Peter and St. Paul Church in Hathern. We were invited to talk about RABI's work. After the talk and lots of wonderful questions and discussions, they very generously donated £165 that we are so very grateful for.



East (Kim Claxton)

I am thrilled to be the interim RM for the East of England and to be working alongside our fabulous committees in Norfolk, Suffolk, Cambridge, Hertfordshire, and Essex. Our volunteers are very excited to be able to host events again. The response from our friends who support these events has been enormous, with everyone looking forward to socialising again with neighbours and friends.

There are 20 upcoming events and shows planned throughout the region ranging from Cereals and several county shows, to lunches, BBQs, and afternoon teas, to clay shoots, golf days, and open farm days. It's a full calendar for sure.

Durrants charity clay shoot cheque presentation

Earlier this year, RABI were presented with a cheque by Durrants Estate Agents from their annual fundraiser.

Dominic Parravani, Durrants Managing Director said, "Our annual charity clay shoot has become a firm fixture in our fundraising calendar. Our recent event, raised an outstanding £1,053.94!"

Mrs Thorogood said, "On behalf of Suffolk RABI, we would like to say thank you so very much indeed for choosing our charity to donate this amazing sum. We really do appreciate receiving this money, which will go straight to our beneficiaries."

Cheque presentation to Essex RABI

Essex secretary Peter Hickling received a cheque from Rob Morrell chairman of Greenstead Green Agricultural Club for £300. Charlie Flindt had spoken at the Club's annual dinner and he requested a donation to be made to RABI in lieu of a fee.



Richard Prentice of Durrants, presenting a cheque to David Locke, of RABI and Thelma Thorogood Suffolk Chair for RABI



West Midlands (Kate Jones)

It's already been a busy year for the West Midlands, with several great events taking place and many more planned for the summer.

Shropshire quiz



The Shropshire quiz prize winners Pat and Jim Davies and Ann Stokes

On 11 March, over 50 people took part in the annual quiz arranged by Shropshire committee member Mervin Mullard to raise funds and awareness for RABI.

After a delicious two course meal prepared and served by the Shropshire committee, six rounds of testing questions and two table rounds were put to the thirteen teams. The winning team consisted of Jim and Pat Davies and Ann Stokes, and a fantastic total of £877 was raised for RABI.

Shropshire NFU county chairman's lunch

On 8 May 150 RABI supporters attended a two course lunch and raffle at Minsterley Parish Hall, raising £3,000.

Staffordshire Dinner with the Yorkshire Shepherdess



Staffordshire RABI committee and supporters with the Yorkshire Shepherdess, Amanda Owen

On Thursday 17 March, Staffordshire committee and supporters were welcomed to the Staffordshire County Showground for the annual dinner. With over 400 guests, there was wonderful support for RABI.

Amanda Owen, known better by many as the Yorkshire Shepherdess, delivered an inspirational speech, with guests hanging on her every word. Amanda spoke of her incredible journey, tales of the family farm and her passion for British agriculture.



The Yorkshire Shepherdess with Kate Jones

Amanda's straight-talking nature, humour and connection with all the guests resulted in a particularly successful evening. Staffordshire YFC ran a raffle, raising over £1,300, and guest auctioneer, Mike Williams, added a further £2,100 to the funds as he auctioned off 14 lots.

The overall donation was £14,220, so a special thanks to the Staffordshire committee for this amazing post pandemic comeback.



Thank you from Yorkshire Shepherdess, Amanda Owen



Southwest (Pam Wills)

Cornwall review

In January, outgoing Cornwall chairman John Perry reviewed the past two years before handing over to new chair, Edward Buckland. Despite the pandemic, the committee had raised an incredible £20k through online quizzes and auctions. Being online meant the evenings could go global, with people joining from as far afield as Australia. A very entertaining online presentation was produced by committee member Sam Oatey of Oatey Media – he even managed to persuade Father Christmas to call in!

Devon spring bash

A great evening bash was held in February at Langstone Cliffs Hotel, Dawlish Warren. 120 guests including local farmers, agri businesses, and Young Farmers enjoyed a sumptuous meal before being well entertained by Devon comedian Tank Sherman. The auction that followed attracted some lively bidding and amateur auctioneer, committee member John Smith, raised £820 through sales.

Overall, over £3,000 was raised during a very enjoyable evening expertly organised by John and Jan Yeoman and their team.

Dorset quiz

Following a successful Christmas quiz, the Dorset Committee held a Jubilee quiz in April to celebrate our Patron Her Majesty's Platinum Jubilee. As always, the Pengelly family at Gorwell Farm were excellent hosts. Knowledge of all things royal and related to the past 70 years were tested by the very competitive teams, with the victors being local team Norfolk & Chance, narrowly beating off the Corgis from Weymouth.



Cornwall county committee at their review event with RABI trustee John Hoskin



Devon Spring Bash



Southeast (Andy James)

Since joining RABI in February, there has been much to do in support of the five South East county committees and their exciting plans for 2022 and beyond!

In the lead up to Easter, the Kent county committee had already run a number of great fundraising events, including a RABI Raceday at Plumpton racecourse and five well-attended Farmhouse Breakfasts. Kent also organised and facilitated a hugely successful Clay Shoot Day, which raised an amazing £4000 for RABI on the day alone.

In addition to our programme of established and highly enjoyable local farm and rural community events, we will be working to develop new projects to encourage young people and members of the non-farming community to raise funds and promote awareness of RABI and the important work we do.



Essex RABI Secretary Peter Hickling receiving a cheque from Rob Morrell, chairman of Greenstead Green Agricultural Club



South Central (Laura Ractliffe)

The first half of the year has kicked off with several great events throughout the South Central region, with many more planned for the summer. Well done to the committees for their hard work and enthusiasm.

Warwickshire Farmhouse Breakfast

In February, the Warwickshire RABI county committee hosted a farmhouse breakfast at Wethele Manor by generous permission of the Moreton family. The committee sourced local ingredients all kindly donated, the team at Wethele Manor kindly cooked the breakfasts for the guests, the committee served and cleared the breakfasts. Attended by around 100 guests, the breakfast raised a fantastic £2,772 in total.

Gloucestershire breakfast

The Gloucestershire RABI county committee held their Farmhouse Breakfast event at Stowell Park, Yanworth for the second time in March. It included a full English breakfast cooked by Marianne Combe and helpers. A prize draw took place with plenty of lovely prizes, including a beef box, clay pigeon shooting vouchers, and some bottles. David Barton auctioned a wheelbarrow full of booze for £260! 80 guests attended the breakfast and raised a terrific £1,700 for RABI.

Celebrating Great British Beef Week (GBBW).

It's one of the highlights in the culinary calendar and three of our county committees made the most of RABI's long standing partnership with Ladies in Beef with special fundraising events.

Bucks RABI Pie & Pudding night

Bucks RABI held their Pie & Pudding Night at The Bell, Winslow after a 2-year break due to Covid. 50 people joined the committee to celebrate. Beef pie was on the menu with a delicious selection of desserts, followed by a raffle. The evening raised £547.

Berkshire RABI St George's Day Beef dinner

Berkshire RABI held a St George's Day beef dinner at The Queens Lodge, East Garston to celebrate. 60 people attended, filling the venue! A lovely 3 course dinner was served, with the roast beef donated by the local Rooksnest Estate – just down the road from the venue. The evening was successfully topped off with a raffle.

Gloucestershire GBBW supper

Gloucestershire RABI committee and Tanya Robbins, Ladies in Beef member, held a beef supper and raffle fundraiser at The Star, Ashton Under Hill. It was a sell-out event with 46 attending taking over the whole restaurant! The event raised £574.

Wiltshire RABI GBBW dinner

55 guests joined the Wiltshire RABI committee at The Bear Hotel, Devizes. There was slow cooked blade of beef followed by a selection of desserts. The raffle included a lovely hamper donated by NFU Mutual Marlborough and other goodies.



Warwickshire RABI farmhouse breakfast



Gloucestershire RABI farmhouse breakfast

Regional managers

RABI's team of regional managers are your local point of contact and work closely with our county committee network and volunteers to organise fundraising events and raise awareness of the charity's support for farming communities.

For fundraising enquiries email fundraising@rabi.org.uk



Lauren Codling – Northwest

Regions covered: Cheshire, Cumbria, Lancashire, Merseyside, South Yorkshire, West Yorkshire.

Email: Lauren.Codling@rabi.org.uk

Phone: 07525 323450

I recently joined RABI and I am loving getting to know the farming community better to ensure I can raise awareness and ensure everyone who needs us can access support.



Sally Conner – Northeast

Regions covered: Co Durham, East Yorkshire, Northumberland, North Yorkshire,

Email: Sally.Conner@rabi.org.uk

Phone: 07818 093506

I am a farmer's daughter, sister, and wife, and have worked for RABI for over ten years.



Dewi Parry – North Wales

Regions covered: Anglesey, Caernarfon (Gwynedd), Conwy, Clwyd (Flint/Denbighshire), Montgomeryshire

Email: Dewi.Parry@rabi.org.uk

Phone: 07912 054677

I'm a farmer's son from Clwyd, now living on Anglesey. Before joining RABI I was YFC National Chairman in 2020.



Linda Jones – Wales

Regions covered: Brecon & Radnor, Carmarthenshire, Ceredigion, Pembrokeshire, Glamorgan, Merionethshire, Monmouthshire

Email: Linda.Jones@rabi.org.uk

Phone: 07557 363016

I live on a sheep and beef farm and have proudly worked for RABI for over eight years.



Bekah Anstey – Central

Regions covered: Derbyshire, Leicestershire, Lincolnshire, Northamptonshire, Nottinghamshire, Rutland

Email: Bekah.Anstey@rabi.org.uk

Phone: 07730 765377

Though a new team member, I bring a wealth of knowledge from the voluntary sector and look forward to a busy events calendar.



Kate Jones – West Midlands

Regions covered: Herefordshire, Shropshire, Staffordshire, West Midlands, Worcestershire

Email: Kate.Jones@rabi.org.uk

Phone: 07876 492839

I joined RABI in 2009 and am passionate about supporting British agriculture and farmers, but also get a lot of satisfaction from fundraising and arranging events.



Kim Claxton – East

Maternity cover for Lucy Bellefontaine

Regions covered: Bedfordshire, Cambridgeshire,

Essex, Hertfordshire, Norfolk, Suffolk

Email: Kim.Claxton@rabi.org.uk

Phone: 07841 053244

I have been involved in fundraising for most of my working life and am delighted to be the interim RM during Lucy's maternity leave.



Pam Wills – Southwest

Regions covered: Cornwall, Devon, Dorset, Somerset

Email: Pam.Wills@rabi.org.uk

Phone: 07825 336224

I've been with RABI for over ten years, working in the farming community and making a difference to rural lives.



Laura Ractliffe – South Central

Regions covered: Berkshire, Buckinghamshire, Gloucestershire, Oxfordshire, Warwickshire, Wiltshire

Email: Laura.Ractliffe@rabi.org.uk

Phone: 07919 478518

Raised on a dairy and beef farm in Gloucestershire, I have a passion for the agricultural sector, and know first-hand the issues that we face.



Andy James – Southeast

Regions covered: East Sussex, Hampshire, Isle of Wight, Kent, Surrey, West Sussex

Email: Andy.James@rabi.org.uk

Phone: 07395 792942

I've had a diverse career prior to joining RABI, and live with my family on a small dairy farm.

Service delivery team



Jackie Attfield

Regional welfare officer

Regions covered: Bedfordshire,

Buckinghamshire, Cambridgeshire, Hertfordshire, Northamptonshire, Oxfordshire

I started my role in February 2022 covering Central East and bring many years of casework experience with me.



Gillian Carr

Regional welfare officer

Regions covered: County Durham, East Yorkshire,

Northumberland, North Yorkshire, South Yorkshire

I joined RABI in January and am keen to support the community facing a diverse range of challenges.



Zoe Cauter-Clarke

Regional welfare officer

Remote support

I have been with RABI for four months, and I love working to make a difference in the farming community.



Jackie Clegg

Regional welfare officer

Regions covered: Cheshire, Cumbria, Lancashire, Merseyside, West Yorkshire

In covering the Northwest for some 23 years now, I've had the pleasure of meeting many wonderful people over the years and assisted many in various ways.



Claire Crichard

Regional welfare officer

Regions covered: Brecon & Radnor,

Gloucestershire (North and South), Herefordshire, Monmouthshire.

I have been working for RABI for 21 years, and no two days are ever the same!



Caroline Harrison

Regional welfare officer

Regions covered: Derbyshire, Leicestershire,

Staffordshire, Rutland, Telford (Shropshire), Warwickshire, West Midlands, Worcestershire

As part of the service delivery team, I work with people from the communities of my region who require assistance and guidance in many different areas.



Del Hicks

Regional welfare officer

Regions covered: Dorset, Somerset, Wiltshire

I have worked for RABI for 12 months supporting working and retired members of the farming community. My role has highlighted the various difficulties they face.



Mel Jones

Regional welfare officer

Regions covered: Regions covered:

Anglesey, Caernarfon, Conwy, Clwyd, Merionethshire, Montgomeryshire, Shropshire

I have enjoyed 16 years working to support the farming community at RABI.



Laura Parrott

Regional welfare officer

Regions covered: Berkshire, East Sussex,

Hampshire, Isle of Wight, Kent, London, Surrey, West Sussex

I joined RABI in January 2022, and am enjoying learning a new role in a new sector whilst working alongside some wonderful people.



Gemma Raia

Regional welfare officer

Remote support

I've been a remote welfare officer for four months, it's a new role within the RABI as we look at further ways to support our farming community.



Elonwy Williams

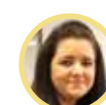
Regional welfare officer

Regions covered: Carmarthenshire, Ceredigion,

Glamorgan, Pembrokeshire

Shwd mae! Elonwy Williams ydw i a fi yw'r Swyddog Lles ar gyfer Ceredigion, Penfro, Sir Gâr a Morgannwg. Rwy wedi bod yn y swydd ers chwe mlynedd.

Hello! I'm Elonwy Williams and I am the welfare officer for Ceredigion, Pembrokeshire, Carmarthenshire and Glamorgan. I have been in post for six years.



Louise Wilkinson

Regional welfare officer

Regions covered: Lincolnshire, Nottinghamshire

I'm a Lincolnshire lass and have been with RABI for five years.

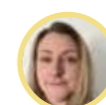


Lindsay Derbyshire

Regional welfare officer

Regions covered: Devon and Cornwall

I started with RABI in March and am getting stuck in with the great work the service delivery team carries out.




Nikki Cochran

Regional welfare officer

Remote support

I recently joined RABI from the Armed Forces charity sector and am really looking forward to supporting our wonderful farming community.



**Farming can be tough.
Talking to someone who
understands can help.**

- Referral to a professional counsellor within 24 hours of a call
- Fast, free, and confidential
- Face-to-face, by telephone or video call

**Call our free, confidential 24/7 helpline
0800 188 4444 | www.rabi.org.uk**